

BT32SY

REPLACES: 00.00.00
REVISED: 06.08.14

FITTING INSTRUCTIONS

TOYOTA KLUGER 03/14-01/17 BIG TUBE BAR WITH FOG LIGHTS VEHICLE FRONTAL PROTECTION SYSTEM (VFPS) FOR AIR BAG & ADR COMPLIANT VEHICLES

Check installation hardware before commencing.

1. Lift bonnet.
2. Remove radiator cover. Nine push pull plastic clips. Push centre of clip to remove and pull to outside to install.
3. Grille is two pieces. Remove six push pull plastic clips from top and centre mounts. Ensure grille is full clipped together across centre. Grille will be removed in one piece with bumper.
4. From rear of flare, remove two 10mm head bolts, two plastic push pull clips (one between bolts and one from guard side of bumper join). Behind centre plastic push pull clip, using a medium screwdriver, turn centre of plastic clip ½ turn and remove centre from clip. **See figure 1.**
5. Under front of vehicle, from front ends of inner guards, remove two 10mm head screws (per side).
6. From centre of under body guard remove six 10mm head screws, ten 10mm head bolts and one push pull plastic clip. Remove centre under body guard.
7. Pull inner guards rearward away from front of bumper and wheel arch too allow access to rear of flare. Disconnect fog lights and daylight running lights and unclip wiring from rear of light assembly.
8. Unclip flare too second clip past guard / bumper join. Lower clips are accessed from rear of bumper **see figure 2**, whilst top two clips are push only style clips.
9. Gently unclip bumper from retaining clips where bolts are removed from inner guard and pull guard sides outward to release from guard, **see figure 3**. Carefully remove bumper from vehicle.
10. Remove polystyrene infill from bumper support.
11. From top of alloy bumper support, remove wiring and allow too hang. This will be refitted later.
12. Remove alloy bumper support, six 14mm head bolts, accessible from holes in front.
13. From lower radiator support, remove two 14mm head bolts and one 14mm head screw from engine cradle bracket. Push support bracket down and around to allow ECB mounting brackets too slide between mount and radiator support. ECB steel mounting brackets only requires holes for bolts and does not fit over welded stud. **NOTE:** Bracket is rubber mounted at rear but is very tight. Engine cradle can be loosened if required but is not recommended.
14. Trim left and right air dams to allow fitment of mount. **See figures 4, 5 and 6.**
15. Install ECB steel mounting brackets to rear of bumper support, **see figure 7 and 8**. Align steel mounting brackets using measurement from Alloy protection bar mounts as a guide. Inside measurement of alloy protection bar

should match outside measure of steel mounting brackets. Using ECB steel mounting brackets as a guide, drill two holes in bumper support to 10mm. **Blow filings clear and treat all exposed metal with a rust inhibitor.**

16. Fit ECB steel mounting brackets to rear of bumper support using two 3/8 x 1 1/4 bolts on wire, flat washers, spring washers and nuts (supplied). Install loosely at this stage.
17. Refit alloy bumper support and ECB steel mounting brackets to vehicle using original equipment bolts. Slide lower mount between radiator support and engine cradle bracket. Refit original equipment bolts and nuts into engine cradle bracket. Align mounts to suit previously taken measurement. **TIGHTEN ALL BOLTS.**
18. Using measurement between steel mounting brackets, mark cut out in rear of bumper lower grille. Recheck measurements before cutting. **NOTE:** Alloy bar fits to outside of steel mounts. Cut two top grille slats to accommodate mounts and to allow access to tow hooks. **See figures 9 and 10.**
19. Disconnect indicator and parking lights on vehicle. Install ECB quick click wiring harnesses (supplied) between disconnected harness and indicator / park lights on vehicle. Run wiring out from under lights ensuring clearance from sharp edges and moving parts.
20. Splice ECB fog light wiring harness into fog light harness on vehicle using cable locks supplied. Ensure harness is clear of sharp edges and moving parts.
21. Remove original equipment fog light only from rear of plastic bumper. This will allow wiring access for ECB lights.
22. Refit bumper as per reverse of steps 1 to 10. Do not fit centre under body guard at this time. Connect original equipment DRL. Feed ECB wiring through fog light holes in bumper.
23. Fit ECB LED indicator / park lights into protection bar as per instructions supplied with the LED indicator kit. **NOTE: Ensure park light is to outside. See figure 11.**
24. Attach ECB fog lights to protection bar. Place M6 x 20 bolts, spring washers (supplied) through light mount from inside and attach nut to top. Slide assembly into light mount in Protection bar and centralize light to hole.) **TIGHTEN FIRM ONLY. See figure 12.**
25. Attach 6mm clip lock trim (supplied) to top of ECB protection bar. **NOTE:** Trim off lower edge on an angle so trim will sit flush with end of protection bar. **See figures 13, 14 and 15.**
26. Attach 6mm clip lock trim (supplied) to cut outs for tow hooks in ECB protection bar.
27. Install ECB protection bar to outside of ECB steel mounting brackets using three M10 x 40 bolts, flat washers, spring washers and nuts (per side) (supplied). **NOTE:** rear bolts are accessible from under vehicle. Align ECB protection bar to vehicle, **see figure 15 and 16 and tighten all bolts.**
28. Connect and test ECB indicator/ park lights and fog lights.
29. Refit under body guard.

ENSURE NUMBER PLATE IS CLEARLY VISABLE

Note: When fitting/refitting the licence plate to the vehicle, ensure there is no obstruction to licence plate vision in accordance with local authorities. If required relocate licence plate to an alternate location.

Further VFPS Notes:

- Do not attach VFPS to the vehicle using anchorages not intended for this purpose (e.g. engine mounting bolts).
- Do not use this product for any vehicle make or model, other than those specified by the VFPS manufacturer.
- Do not remove the plaque or label from the VFPS.
- Do not modify the structure of the VFPS in any way.
- No accessory or fitment should project forward of the VFPS forward profile.
- ENSURE THESE INSTRUCTIONS ARE LEFT WITH VEHICLE OWNER AND/OR OPERATOR.**

IMPORTANT INFORMATION

Periodically check bolts and nuts for correct tightness, especially if travelling on rough roads

FITTING KIT

1 – Pair ECB steel mounting brackets	2 – M6 spring washers
4 – 3/8 x 1 ¼ bolt and washer on 300mm wire	1 – ECB LED indicator / park light kit – ICLED104ECB
4 – 3/8 nuts	1 – ECB fog light kit – ICLED200DRL
6 – M10 x 1.5 x 40mm bolts	1 – Quick Click harness – IC14TOKLINDH
16 – M10 flat washers	2 – Fog light surrounds
10 – M10 spring washers	6 – Cable locks
6 – M10 x 1.5 nuts	1 – 2300mm length 6mm clip lock trim
2 – M6 x 20mm bolts	2 – 300mm length 6mm clip lock trim
2 – M6 nuts	



Figure 1: Placement of hidden plastic clip. Turn centre ½ turn and remove.

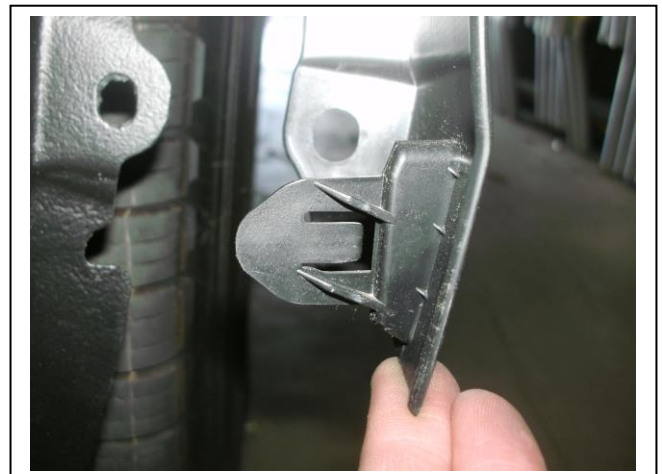


Figure 2: Lower flare clip



Figure 3



Figure 4: Drivers side air dam trim

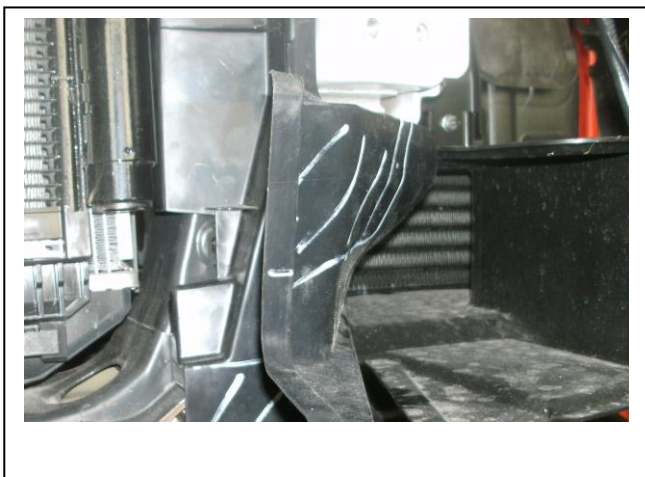


Figure 5: Passengers side top trim



Figure 6: Passengers side lower trim

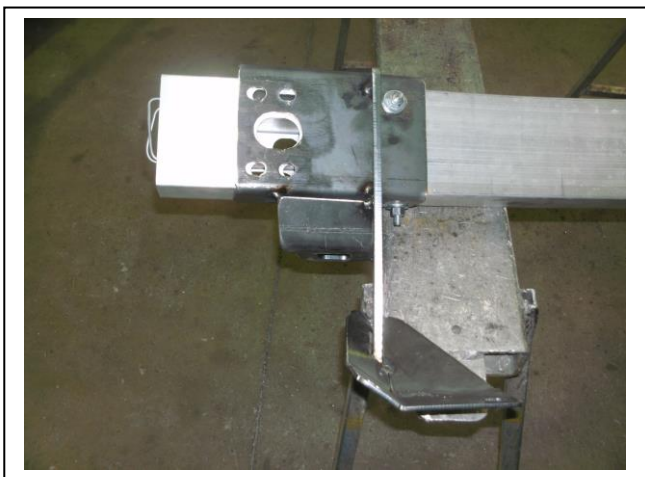


Figure 7: Passengers side

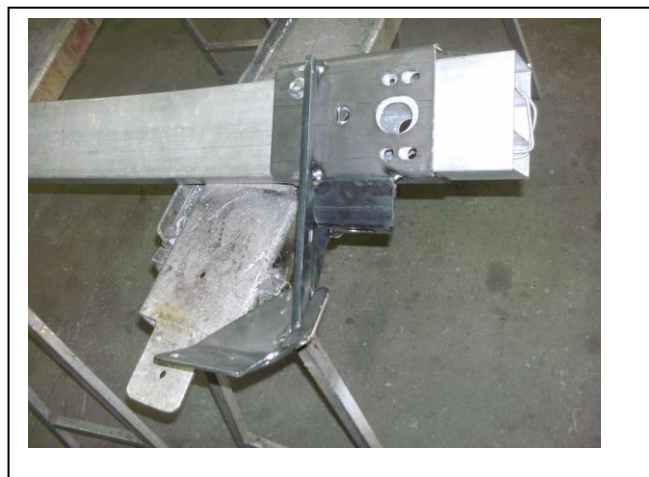


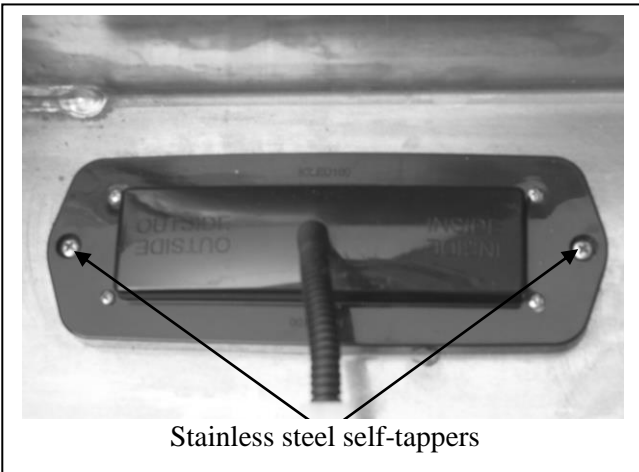
Figure 8: Drivers side



Figure 9



Figure 10



Stainless steel self-tappers

Figure 11

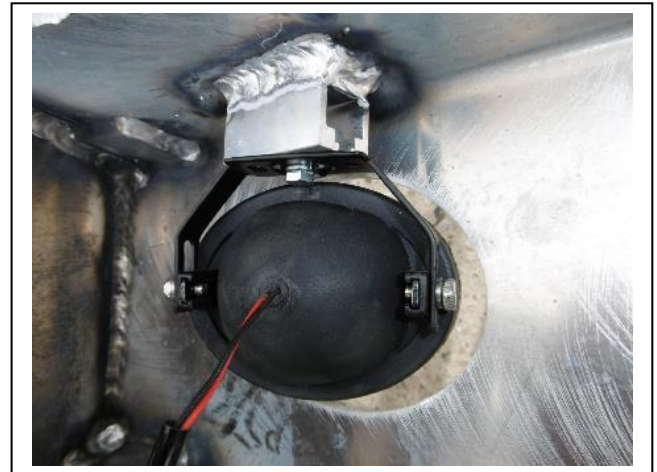


Figure 12

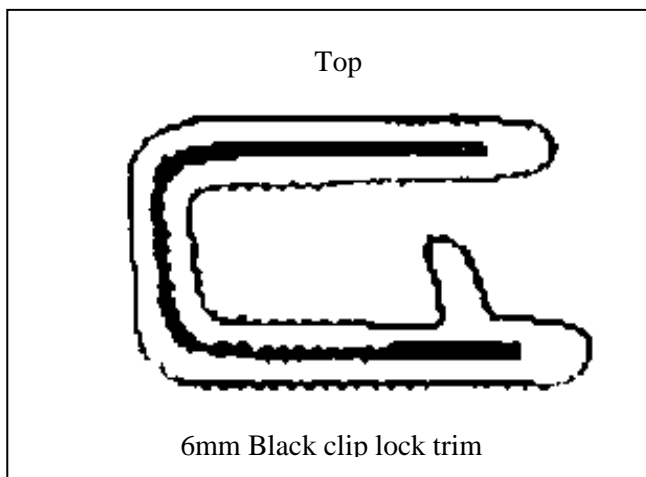
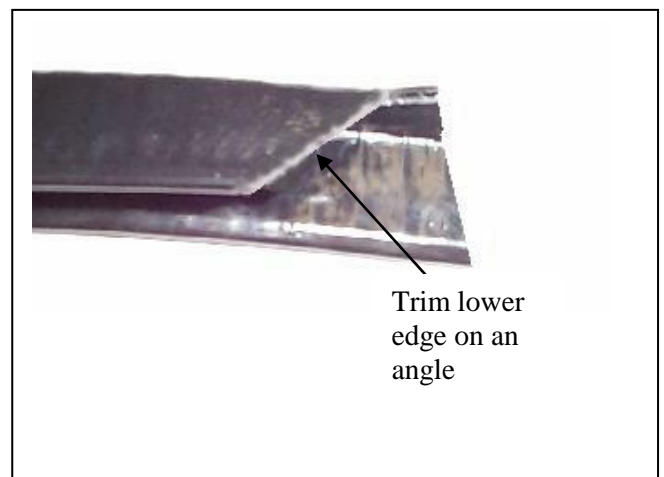


Figure 13



Trim lower
edge on an
angle

Figure 14

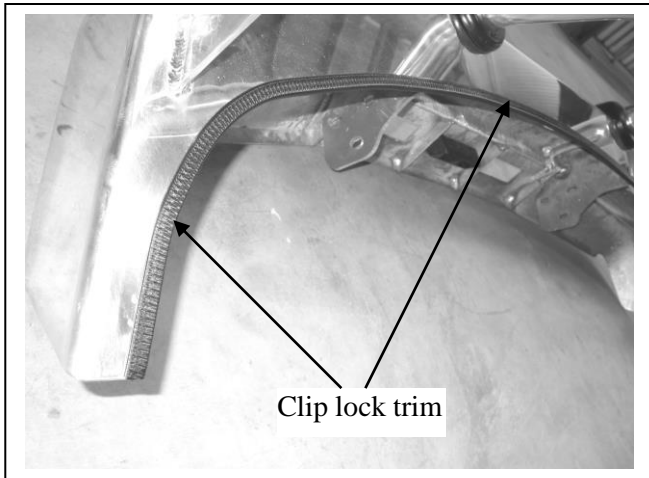


Figure 15

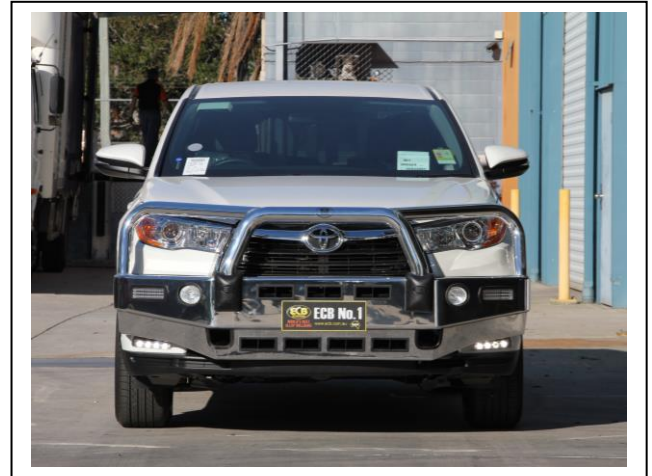


Figure 16: Big Tube Bar front

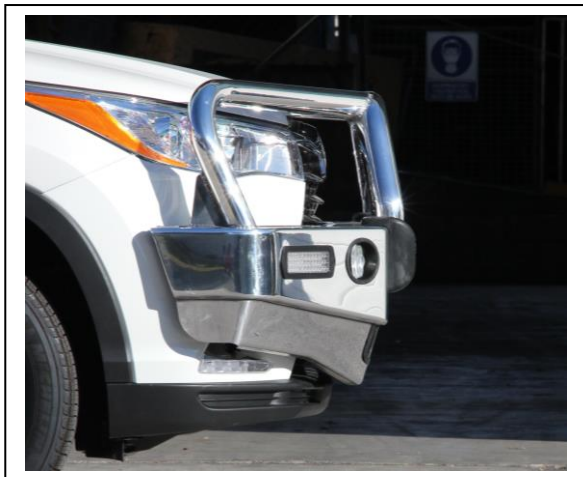


Figure 17: Big Tube Bar side



**Lighter
Stronger
Better!**

A: 29 Snook St Clontarf QLD 4019
A: PO Box 122 Margate QLD 4019
P: 07 3897 5700
F: 07 3283 1168
E: info@ecb.com.au
W: ecb.com.au
W: customalloy.com.au



We value your comments

Dear Fitter,

ECB would like to know how you went with the installation of this product. We value your comment and may need to contact you to clarify some details so please complete your contact details clearly.

We would appreciate if you could complete as many of the following details as possible.

Your Name:	Your contact No.
Product Part No.	Product Invoice No.
Product Description:	Make, model, and year of vehicle:
Product Work Order No.	Company your from/Company product purchased from:

Date of Fitment: ____/____/____

Was the fitting hardware supplied complete?

Yes

☐

No

☐

If no what was not supplied

Did the installation go well?

Yes

☐

No

☐

Please provide comments

Please draw diagrams if you need to.

Post to
Reply Paid 122
PO Box 122
Margate QLD 4019

Fax to
(07) 3283 1168



**Lighter
Stronger
Better!**

A: 29 Snook St Clontarf QLD 4019
A: PO Box 122 Margate QLD 4019
P: 07 3897 5700
F: 07 3283 1168
E: info@ecb.com.au
W: ecb.com.au
W: customalloy.com.au

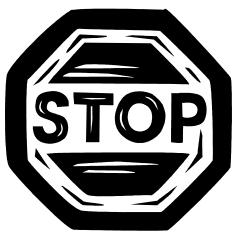


DESPATCH CHECKLIST BT32SY

Work Order #		See other side of this page for photos of all mounts
Finish:		
Transport:		
Due Date:		

- ☐ OC.....1 – Pair Steel mounting brackets
- ☐ OC.....1 – Bolt Kit
- ☐ OC.....2 – ECB Overrides
- ☐ OC.....7 – 6mm air scoops
- ☐ WR.....1 – Pair Steel mounting brackets – **Fitted to bar**
- ☐ WR.....1 – Bolt kit – **Taped inside wing**
- ☐ WR.....2 – ECB Overrides - **Fitted to bar**
- ☐ WR.....7 – 6mm air scoops – **Fitted in bar**

_____/_____
Wrapper's initials / Checker initials



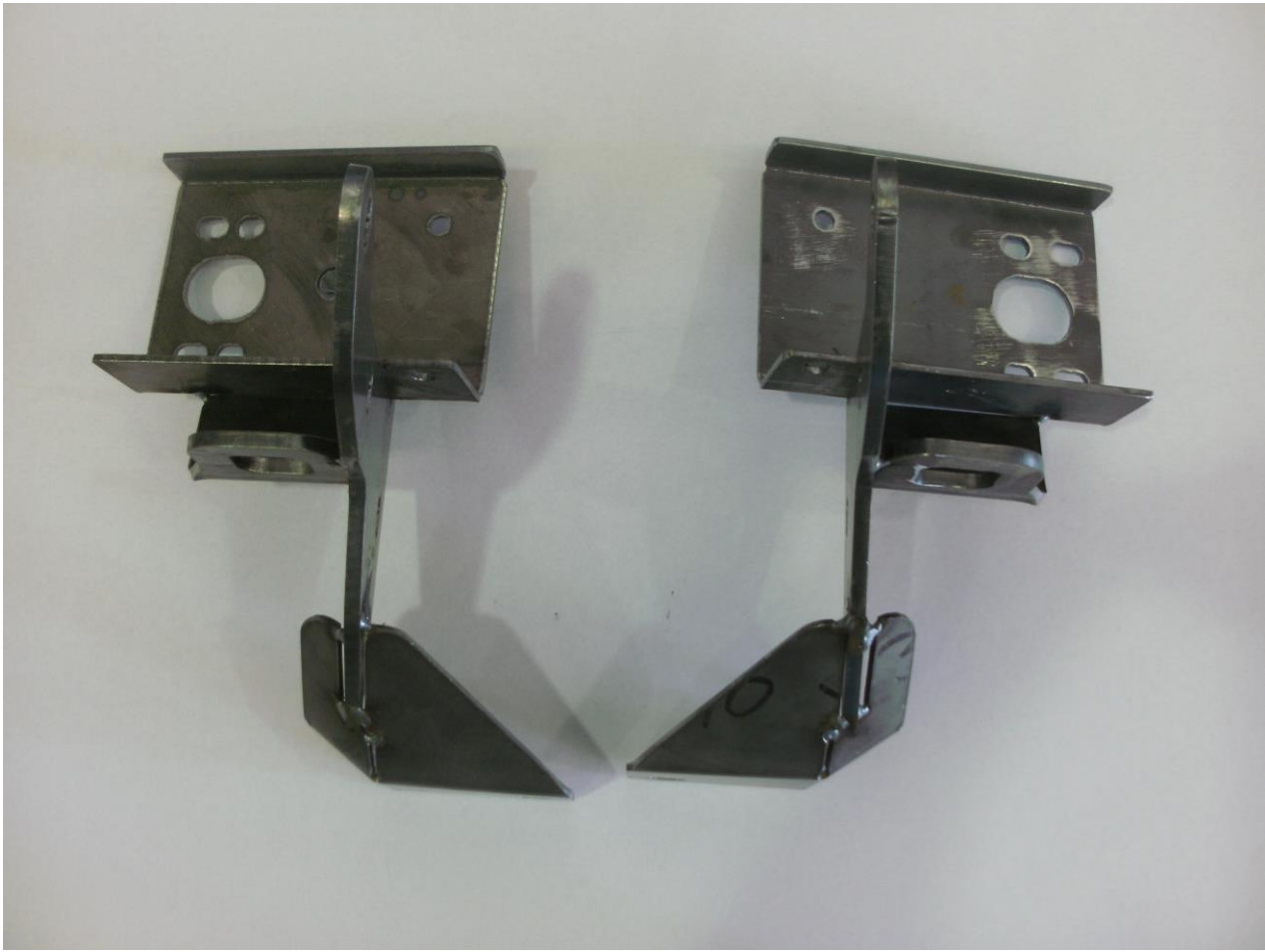
Is this product “the best it can be” Yes
If **NO** fix before continuing

All parts checked and completed by:

Nut and bolts: _____ Date __/__/__

Order control: _____ Date __/__/__

Final wrap check: _____ Date __/__/__



_____/_____
Wrapper's initials / Checker initials